

# Paper Panache 3D Christmas Ornaments

## UPDATED FOR 2014

PAPER-PIECED FOUNDATION PATTERN

### *General Paper Piecing*

You can find the online paper piecing instructions at <http://www.paperpanache.com/howto/Zhowtos.htm> . It outlines the steps for general paper piecing and also include tips for faster , easier sewing. The essentials to remember are:

- Cut the pattern apart on heavy solid lines. Sew on the lighter lines.
- If no printed seam allowance is shown, remember to add at least 1/4" of fabric beyond the edge of the paper for the seam allowance.
- Trim paper-pieced seam allowances to 3/16." Trim to 1/8" where the pieces get smaller and closer together.
- After all sections have been covered, sew sections together in lettered order. Trim seams between sections to 1/4" and press open.
- See instructions for when to remove paper.

### *Colors*

You'll need three Christmas fabrics per ornament. If you're considering green, think about using brighter greens which can be seen more easily against the green of the tree.

### *Ornament Construction*

- 1** Decide whether you will be piecing the **dated band** or using the **plain band**. Cut out the four pattern pieces for the top and bottom and the band pattern you've settled on.
- 2** Paper piece all A and B sections. Join As to Bs to create both a top and a bottom (two 3/4-circle shapes). Remove the strips of paper along each seam and press the seam allowance open. Then trim seam allowance along the edge of the paper all the way around. See Figure 1.
- 3** **For the dated band**, paper piece the numbers, making sure to add seam allowances on each side of the number sections. Join and press open seams between numbers. Add the long strips on each side. Trim the top and bottom edges of the band, taking care to preserve the 1/4" seam allowance—band will be 1-3/8" wide. Do not trim the ends of the band. They will be longer than necessary at this point.

Continued



**Figure 1.** Paper-pieced top, bottom, and 2014 band with seam allowances trimmed.



*Paper Panache  
Patterns*

© 2005, 2013 by Linda Worland  
hi\_linda@paperpanache.com

**This pattern is for your  
personal use only.  
Please do not copy or  
distribute this PDF file  
without prior permission.**

Please direct inquiries for  
Paper Panache patterns to  
<http://www.paperpanache.com>  
or

Paper Panache, Images and  
Ideas for Paper-Piecing  
P.O. Box 2124  
Winnetka, CA 91396-2124  
(818) 999-1981

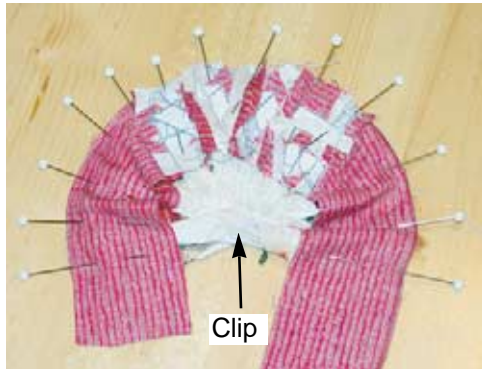
# 3D Dated Christmas Ornaments

For the plain band, it is easiest to rotary cut a strip 1" x 9-1/2". Or, glue or pin the pattern to the wrong side of the band fabric and cut out band.

**4** On top and bottom pieces, clip fabric in the V as indicated. Mark the center line in the seam allowance on wrong side of top and bottom before removing paper.

**5** Remove pattern paper from ornament top, bottom, and band. It is not necessary to do a perfect job of removing all bits of paper except to clear it from the seam allowances.

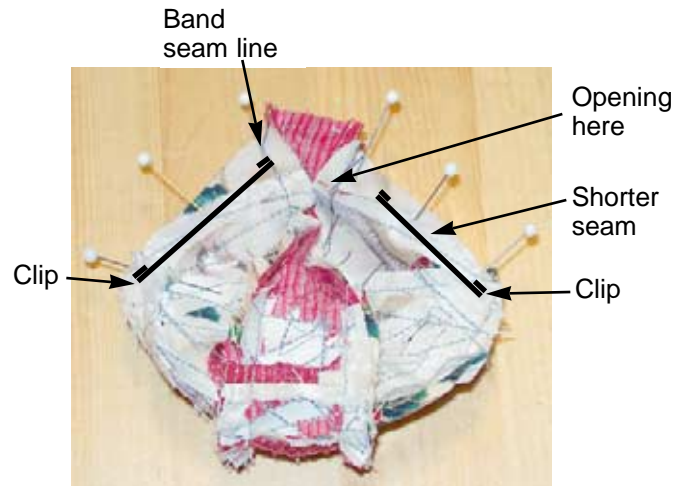
**6** Find the center of the band: On plain band, fold in half and crease with thumbnail. On dated band, the center is the point between zeroes. With right sides together, match centers and pin the bottom of the band to the ornament bottom. Start at center and pin around edge in each direction. You'll have more band than you have edge, but that's okay. See Figure 2.



**Figure 2.** Wrong side of dated band showing, pinned to bottom around edge.

**7** Sew band to ornament bottom using 1/4" seam. Back stitch at beginning and end of seam.

**8** Pin and sew top edge of band to ornament top, wrong sides together, same as steps 6 & 7. The top and bottom of the ornament are now joined with the band in the middle.



**Figure 3.** Sewing the side seams.

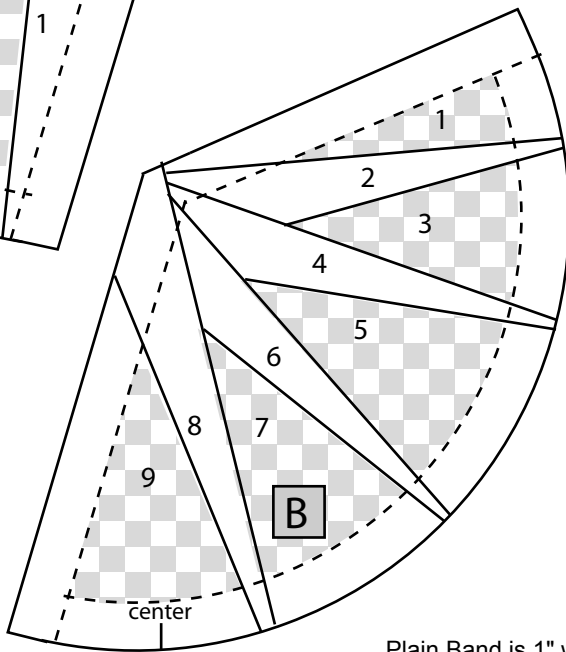
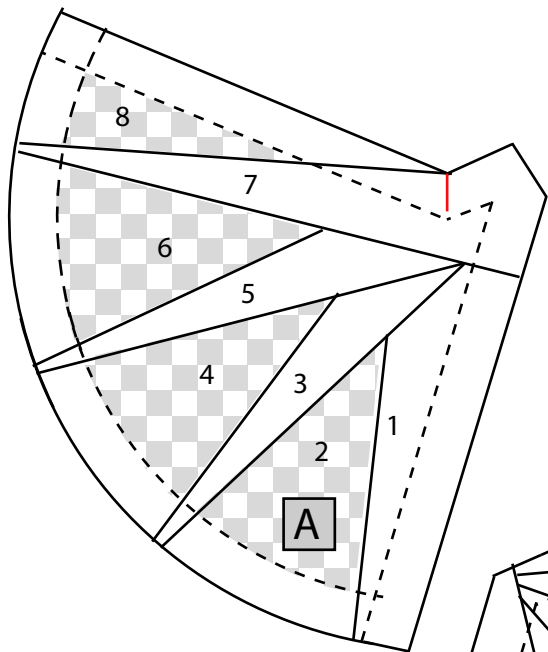
**9** Figure 3 shows the ornament, wrong side out, folded with raw edges together. The band ends have been matched together and trimmed so that they stick out a little farther than the ornament sides. Pin the raw edges together as shown, on both sides of the band, from the clips to the band seam lines.

**10** Sew seam from the clip at one end to the band seamline. Sew the other side from the clip to about 1/2" shy of the band seamline. This leaves an opening for turning the ornament right side out. Be sure to use backstitching at all seam ends.

**11** Turn ornament right side out and stuff firmly with scrap batting. Hand sew seam shut. Run thick gold thread through a large-eye needle and attach hanger at top of ornament.

# Paper Panache Dated Christmas Ornament PAPER-PIECED FOUNDATION PATTERN

2014 band is 1-3/8" wide  
(including seam allowances)  
Remember to leave seam  
allowances around the  
numbers when piecing.



This page of patterns  
makes one ornament.  
Ornament top (A+B)  
Ornament bottom (A+B)  
Choose the plain or  
dated band.

Plain Band is 1" wide  
(including seam  
allowances)

